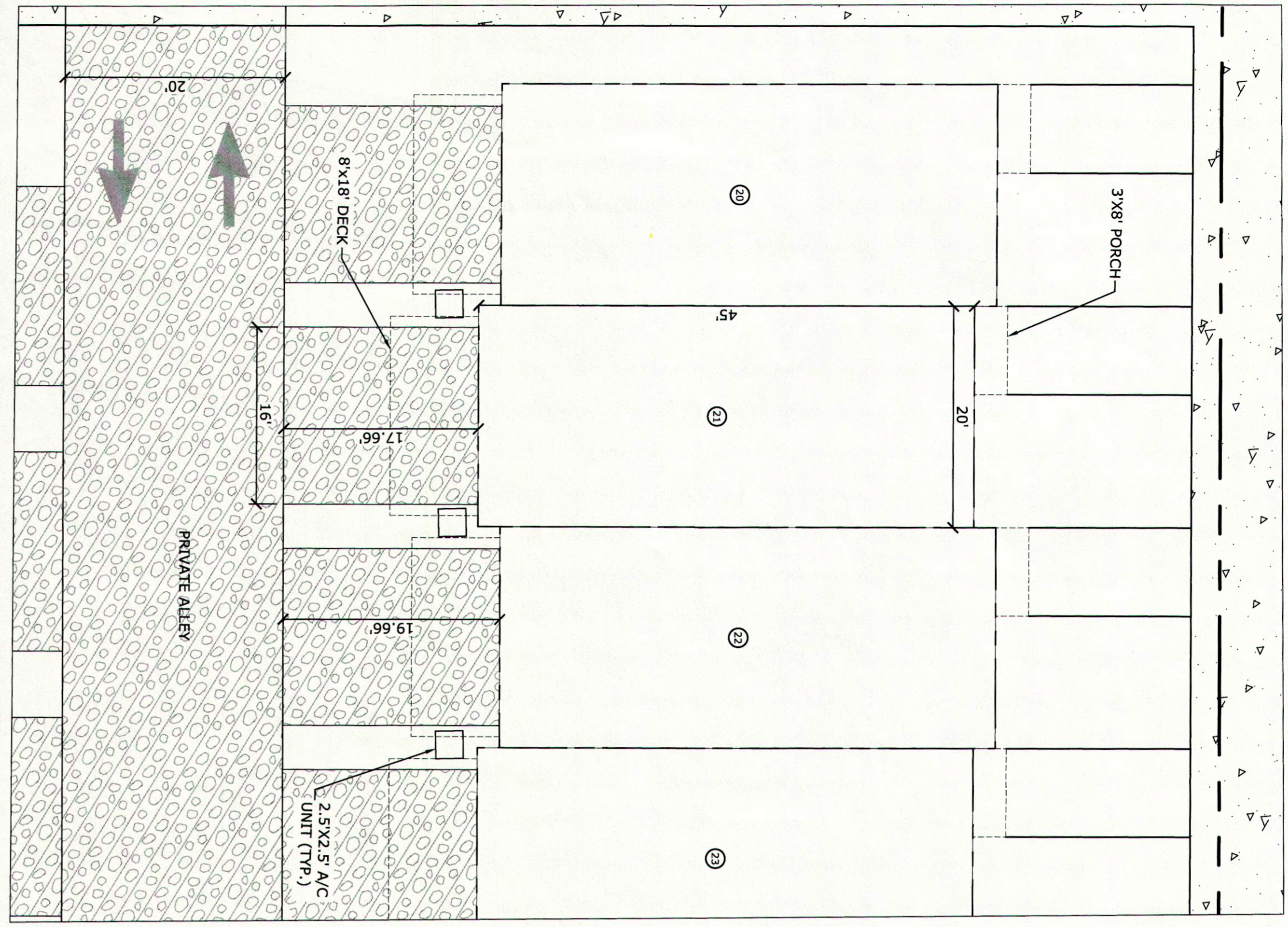
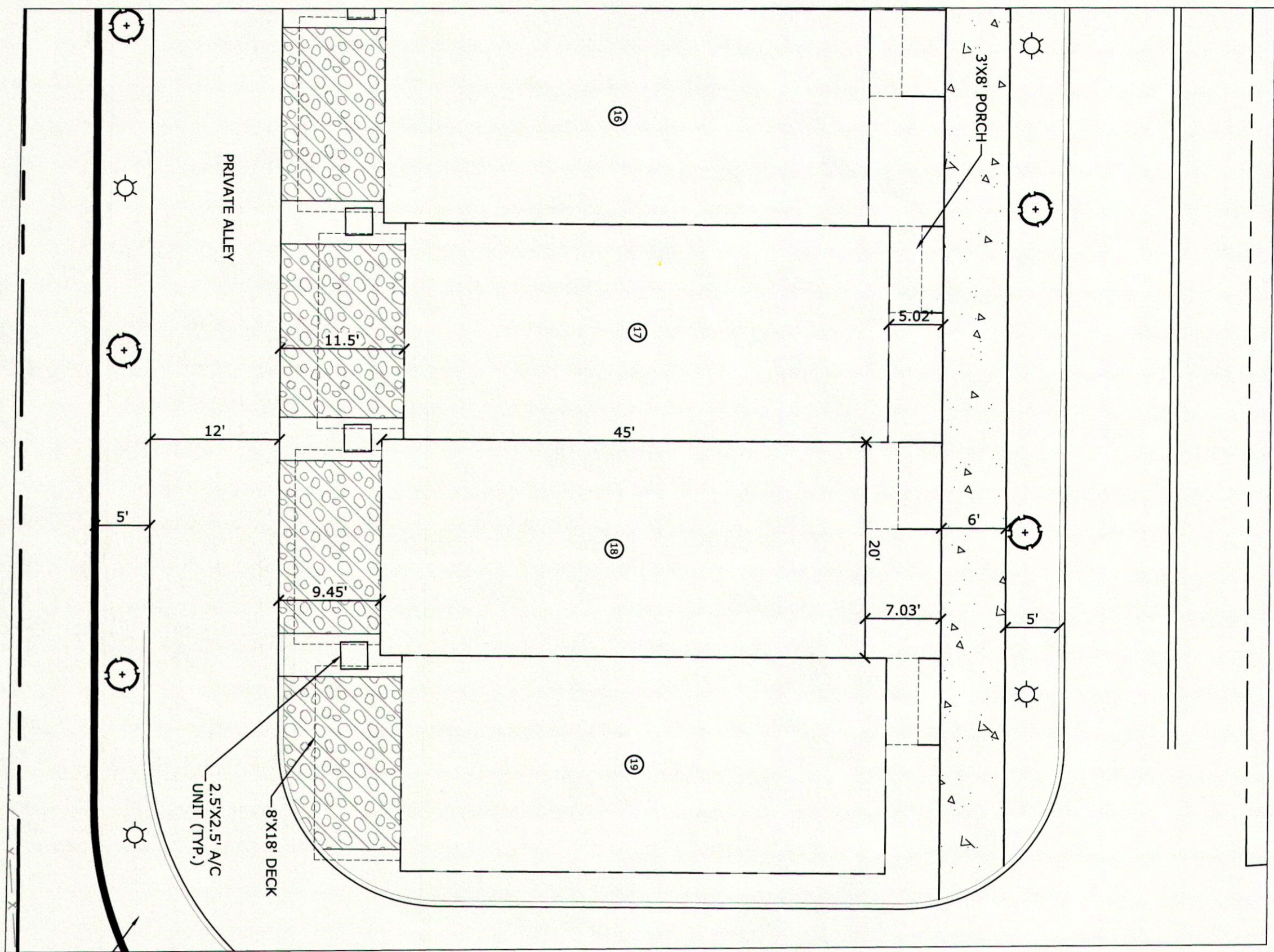
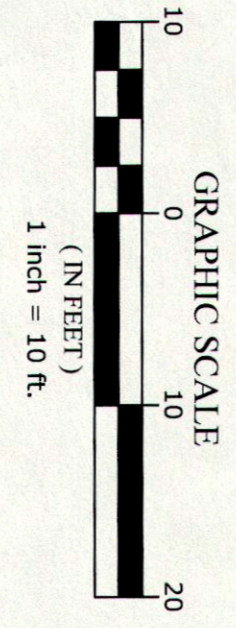


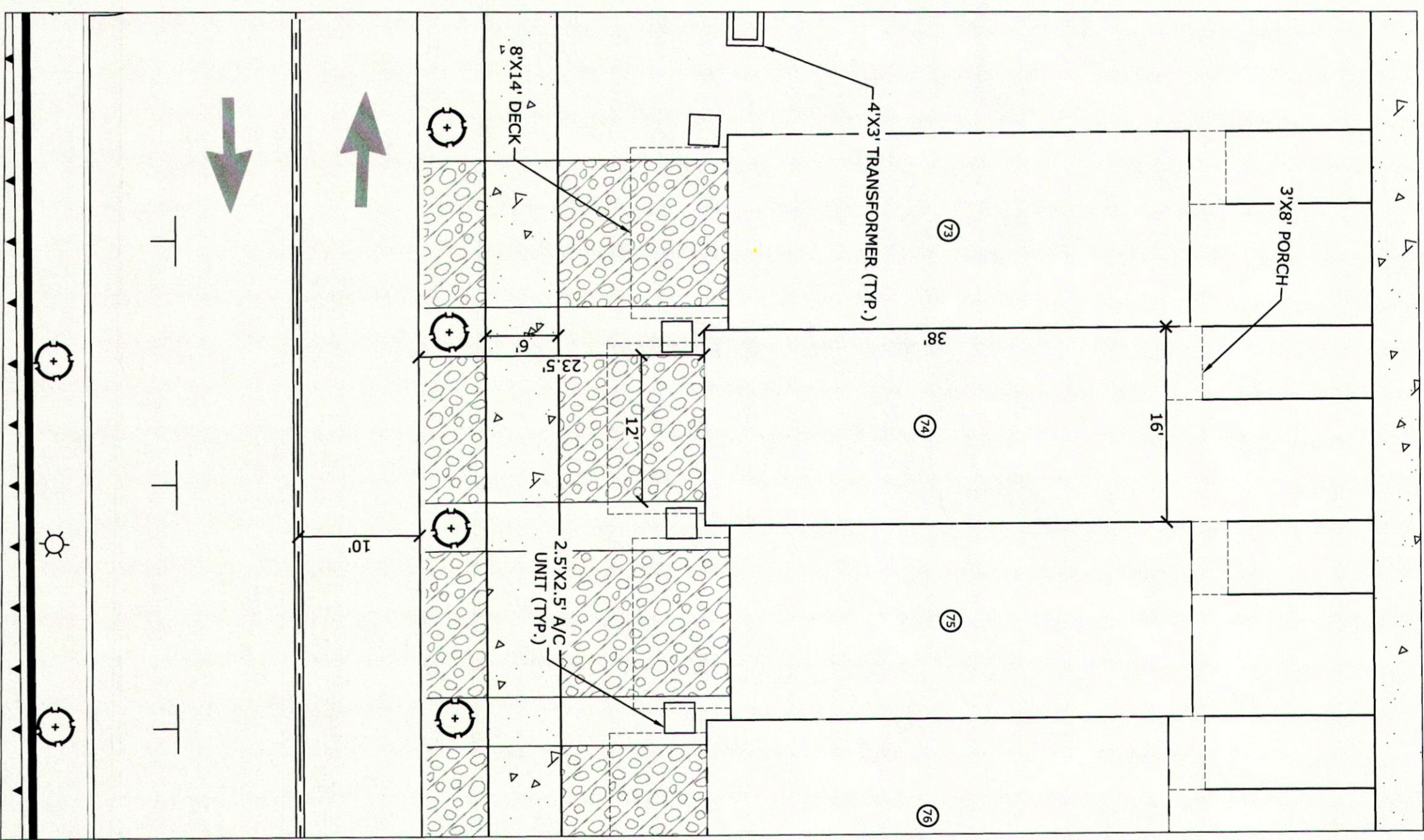
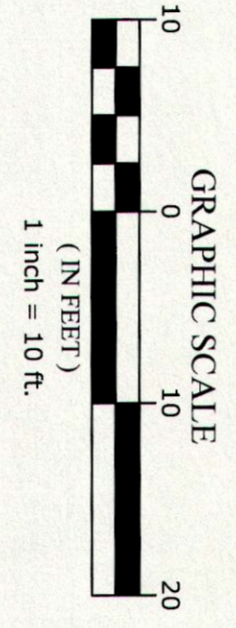
THE UTILITIES SHOWN HEREON ARE FOR THE CONTRACTOR'S CONVENIENCE ONLY. THERE MAY BE OTHER UTILITIES NOT SHOWN ON THESE PLANS. THE ENGINEER ASSUMES NO RESPONSIBILITY FOR THE LOCATION SHOWN AND IT SHALL BE THE CONTRACTOR'S RESPONSIBILITY TO VERIFY ALL UTILITIES WITHIN THE LIMITS OF THE WORK. ALL DAMAGE MADE TO EXISTING UTILITIES BY THE CONTRACTOR SHALL BE THE SOLE RESPONSIBILITY OF THE CONTRACTOR. IT IS THE OWNER/DEVELOPER'S RESPONSIBILITY TO VERIFY EXISTING UTILITY CAPACITY PRIOR TO INITIATING DESIGN. THE ENGINEER MAKES NO GUARANTEES, NEITHER EXPRESS OR IMPLIED, REGARDING EXISTING UTILITY LOCATION, CAPACITY OR CONDITION.



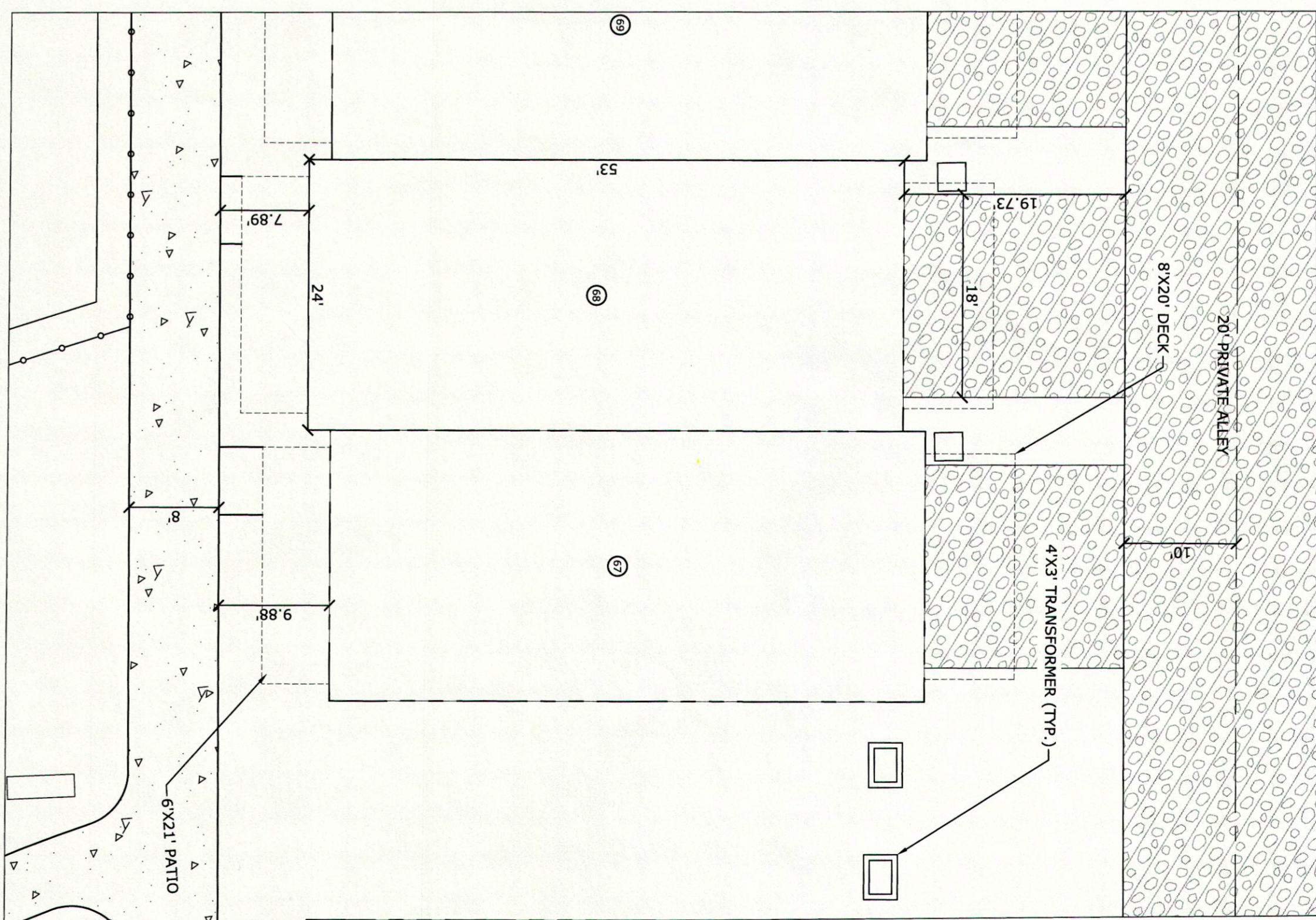
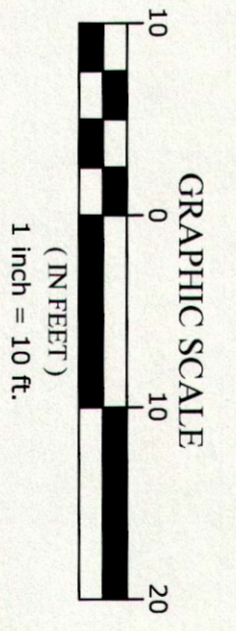
TYPICAL 20'X45' UNIT



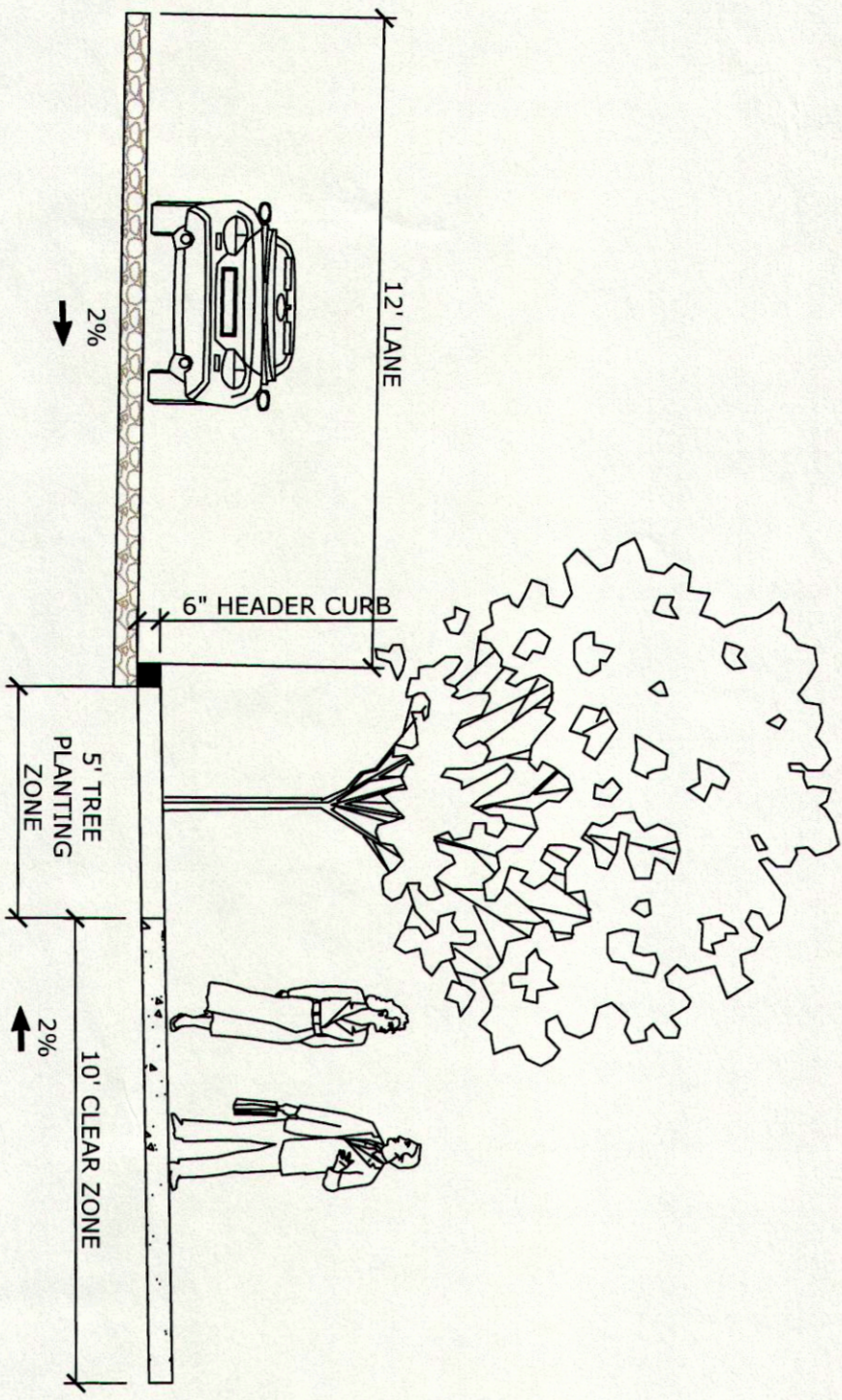
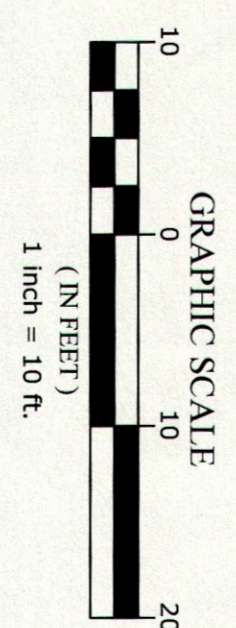
TYPICAL 20'X45' UNIT



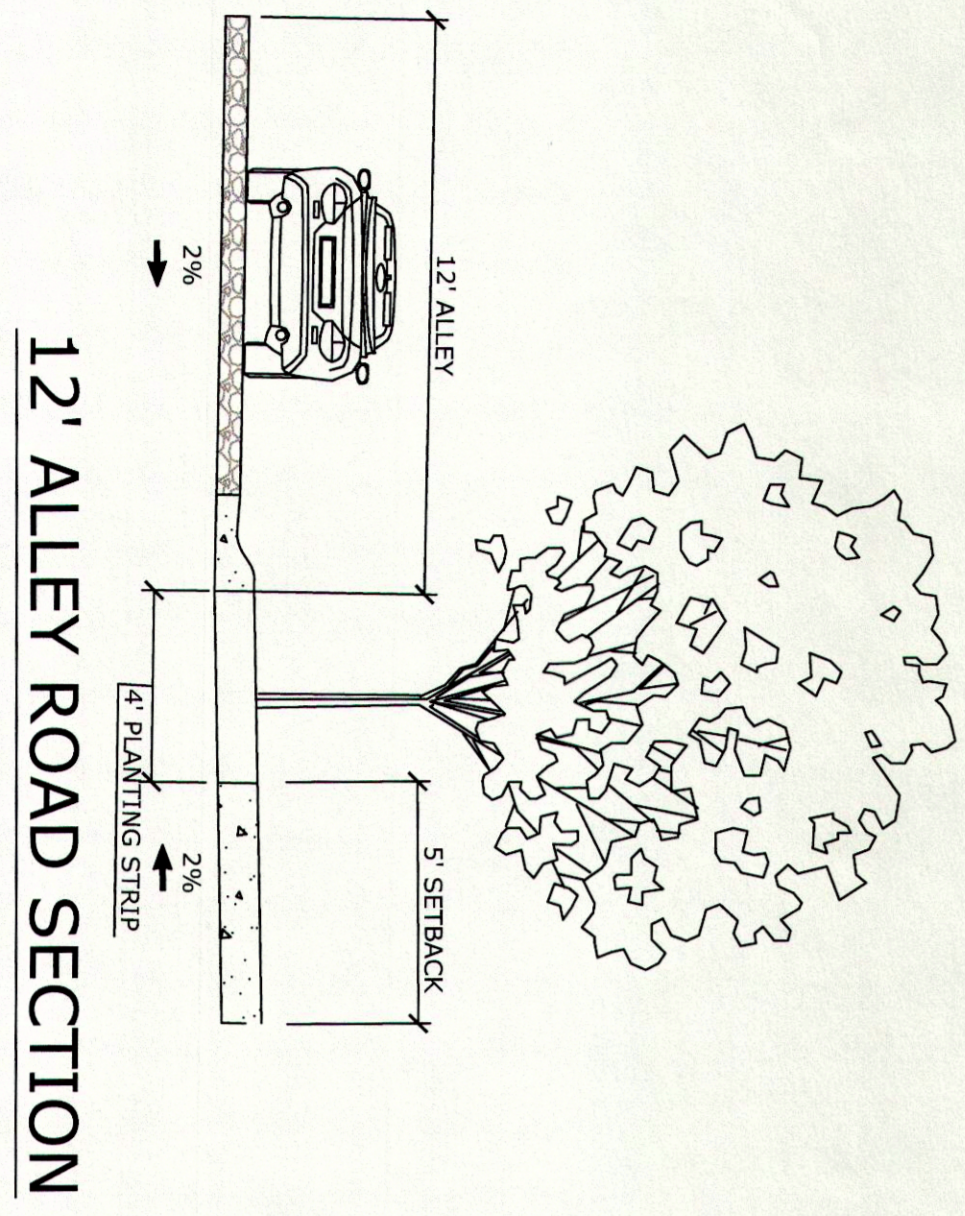
TYPICAL 16'X38' UNIT



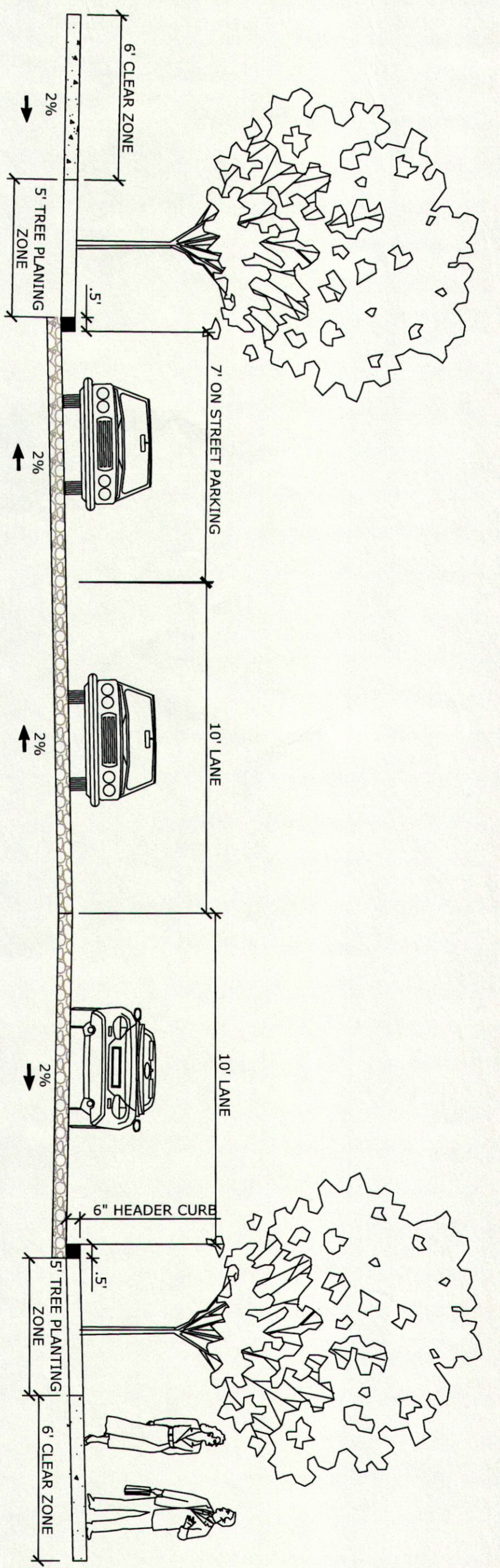
TYPICAL 24'X53' UNIT



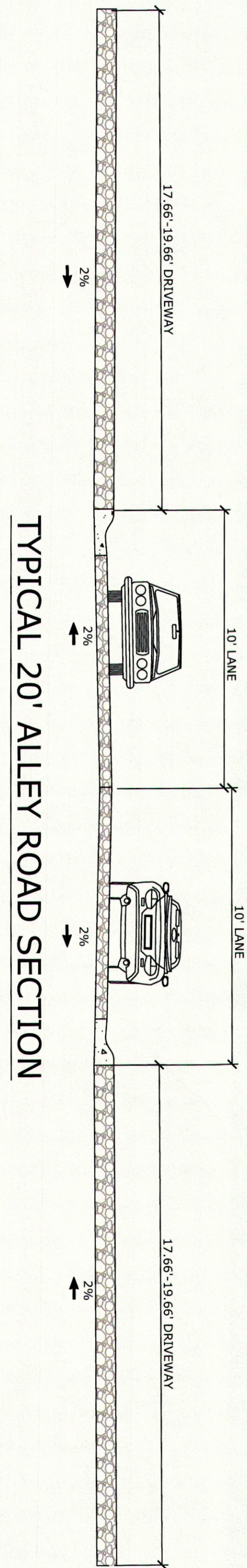
AVONDALE AVENUE ROAD SECTION



12' ALLEY ROAD SECTION



TYPICAL STREET/SINGLE FAMILY ROAD SECTION



TYPICAL 20' ALLEY ROAD SECTION

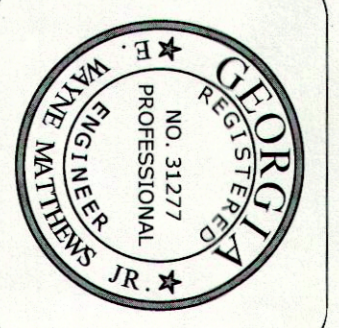
© COPYRIGHT 2015 BY SOUTHEASTERN ENGINEERING, INC. THIS DRAWING AND ITS REPRODUCTION ARE THE PROPERTY OF THE ENGINEER AND MAY NOT BE REPRODUCED, PUBLISHED OR USED IN ANY WAY WITHOUT THE WRITTEN PERMISSION OF THIS ENGINEER.

PROJECT OWNED/DEVELOPED BY  
**RP - GRANT PARK, LLC**  
 PO BOX 260007  
 ATLANTA, GA 31126  
 PHONE: (404) 931-3291  
 EMAIL: PARAGON1@BELLSOUTH.NET  
 24 HOUR CONTACT INFORMATION  
 PATRICK LEONARD (404) 931-3291

No	ISSUED DESCRIPTION	DATE
1		
2		
3		
4		
5		
6		
7		
8		
9		

**SEI**  
 SOUTHEASTERN ENGINEERING, INC.  
 7470 Sandy Plains Road Marietta, Georgia 30066  
 tel: 770-321-1916 fax: 770-321-5933  
 www.seengineering.com

Project No.: 820-13-137  
 Designed By: JMC/KCS  
 Issue Date: 07/15/15  
**SAP**



**AVONDALE AVENUE TYPICAL LOTS & ROAD SECTIONS**  
 AVONDALE AVE DEVELOPMENT  
 PROJECT LOCATED AT:  
 LL 23, 14TH DISTRICT  
 CITY OF ATLANTA  
 FULTON COUNTY

**811**  
 Know what's below.  
 Call before you dig.